



 SICA



 SICA



 SICA

 SICA



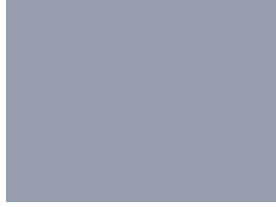
 SICA



 SICA



 SICA



 SICA



 SICA

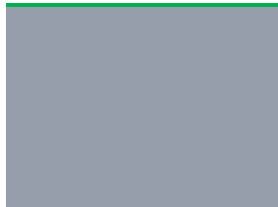
 SICA



 SICA



 SICA



 SICA



 SICA



 SICA

 SICA

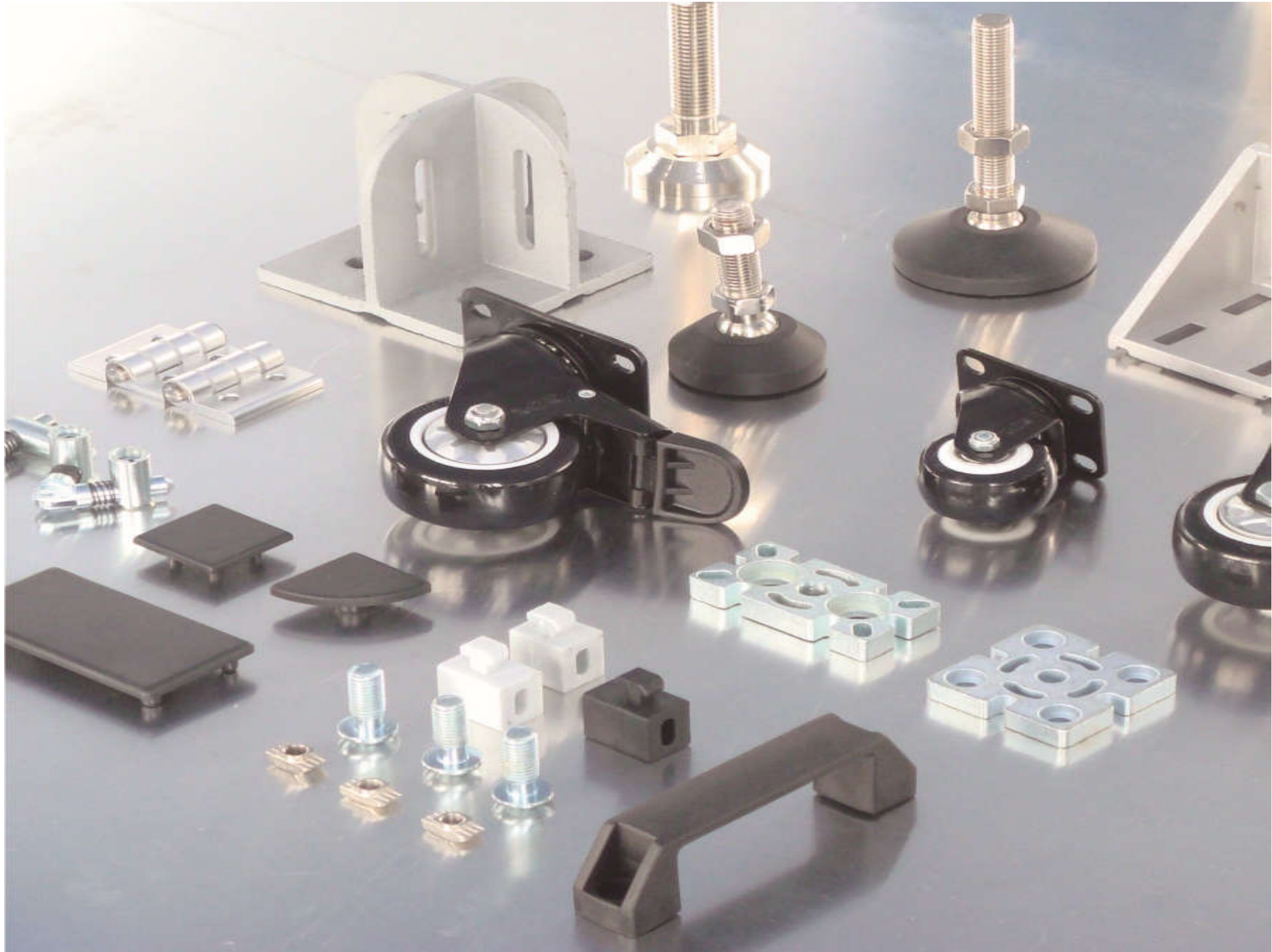


 SICA

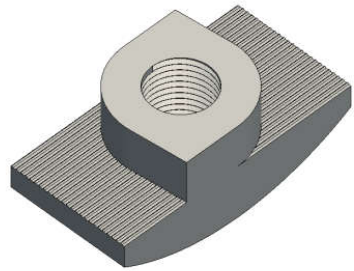


 SICA

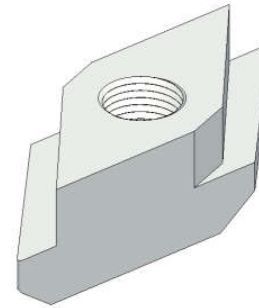




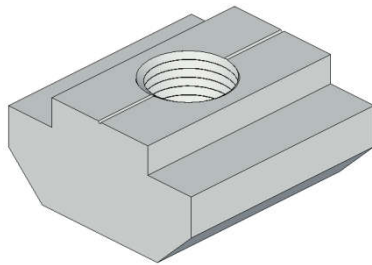
FASTENING ELEMENTS



Hammer Nut



Diamond Nut



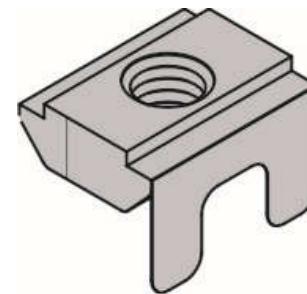
T NUT



Spring Nut



Ball Screw

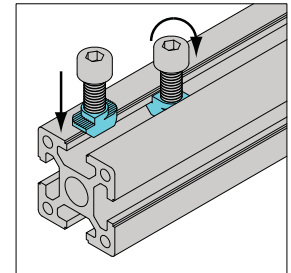


Subsequent Nut

Hammer Nut

Nut can be put into T slot from slot outside directly.

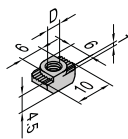
Material : nickel plated steel / white plating



Reliability ★★★★★
 Efficiency ★★★★★
 Cost ★★★★★

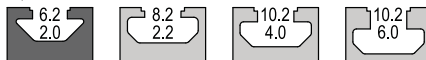
HAMMER NUT

14

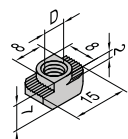


Hammer Nut-6-M4

Hammer Nut-6-M5



D	Material	Mass (g/pcs)	Part No.
M4	plated steel	1.5	06.HM.M4
M5	plated steel	1.5	06.HM.M5



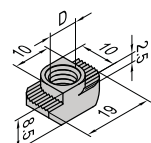
Hammer Nut-8-M4

Hammer Nut-8-M5

Hammer Nut-8-M6



D	Material	Mass (g/pcs)	Part No.
M4	plated steel	3.4	08.HM.M4
M5	plated steel	3.4	08.HM.M5
M6	plated steel	3.4	08.HM.M6



Hammer Nut-10-M4

Hammer Nut-10-M5

Hammer Nut-10-M6

Hammer Nut-10-M8

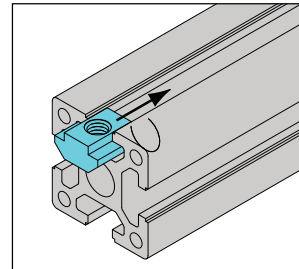


D	Material	Mass (g/pcs)	Part No.
M4	plated steel	7.0	10.HM.M4
M5	plated steel	7.0	10.HM.M5
M6	plated steel	7.0	10.HM.M6
M8	plated steel	7.0	10.HM.M8

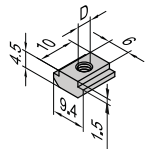
T Nut

Nut can be only put into T slot from profile end.

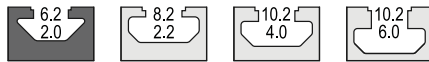
Material : nickel plated steel / white plating



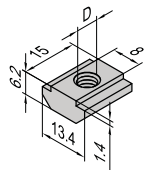
Reliability	★★★★★
Efficiency	★★★★★
Cost	★★★



- T Nut-6-M3
- T Nut-6-M4
- T Nut-6-M5



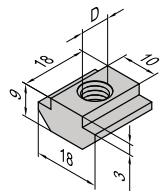
D	Material	Mass (g/pcs)	Part No.
M3	plated steel	2.5	06.TN.M3
M4	plated steel	2.3	06.TN.M4
M5	plated steel	2.1	06.TN.M5



- T Nut-8-M3
- T Nut-8-M4
- T Nut-8-M5
- T Nut-8-M6



D	Material	Mass /pcs	Part No
M3	plated steel	7.8	08.TN.M3
M4	plated steel	7.6	08.TN.M4
M5	plated steel	7.3	08.TN.M5
M6	plated steel	6.9	08.TN.M6



- T Nut-10-M3
- T Nut-10-M4
- T Nut-10-M5
- T Nut-10-M6
- T Nut-10-M8

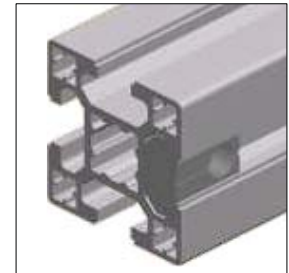
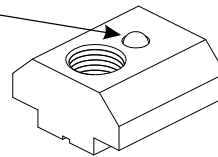


D	Material	Mass (g/pcs)	Part No
M3	plated steel	16.9	10.TN.M3
M4	plated steel	16.6	10.TN.M4
M5	plated steel	16.1	10.TN.M5
M6	plated steel	15.7	10.TN.M6
M8	plated steel	14.3	10.TN.M8

Ball Screw

Nut can be inserted into T slot from outside directly while ball will hold it's position

BALL WILL RETAIN THE T NUT INSIDE THE PROFILE AT THE SPECIFIED LOCATION.

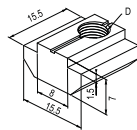


Reliability	★★★★★
Efficiency	★★★★★
Cost	★★★★★

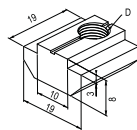


BALL SCREW

16



6.2 2.0	8.2 2.2	10.2 4.0	10.2 6.0
------------	------------	-------------	-------------



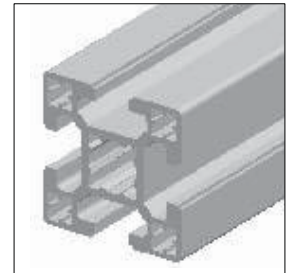
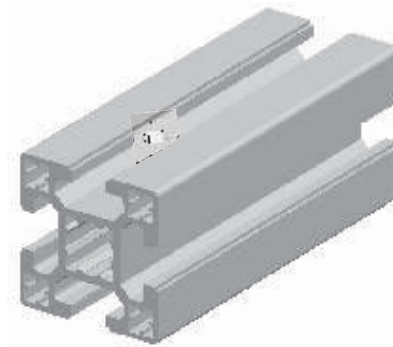
6.2 2.0	8.2 2.2	10.2 4.0	10.2 6.0
------------	------------	-------------	-------------

D	Material	Part No
M5	plated steel	08.BS.M5
M6	plated steel	08.BS.M6

D	Material	Part No.
M6	zinc plated steel	10.BS.M6
M8	zinc plated steel	10.BS.M8

Diamond Nut

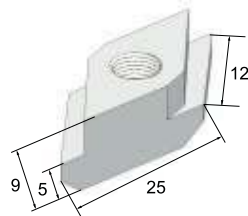
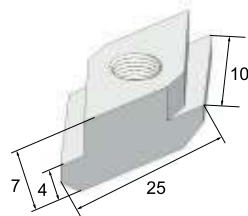
Nut can be inserted into T slot from outside directly while spring will hold it's position



Reliability	★★★★
Efficiency	★★★★★
Cost	★★★★★

DIAMOND NUT

18

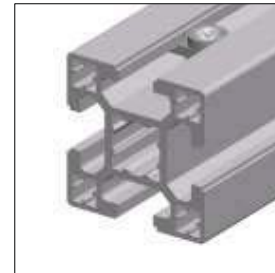
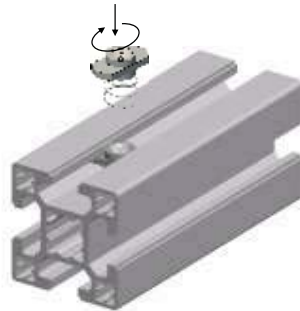


L (mm)	Material	Part No.
18	nickel plated steel	08.DN.M5
18	nickel plated steel	08.DN.M6

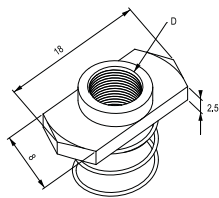
L (mm)	Material	Part No.
21.5	nickel plated steel	10.DN.M6
21.5	nickel plated steel	10.DN.M8

Spring Nut

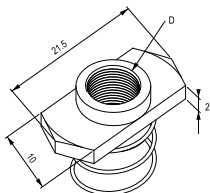
Nut can be inserted into T slot from outside directly while spring will hold it's position



Reliability	★★★★★
Efficiency	★★★★★
Cost	★★★★★



L (mm)	Material	Part No.
18	nickel plated steel	08.SPN.M5
18	nickel plated steel	08.SPN.M6

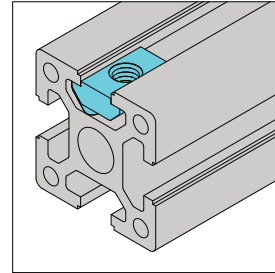


L (mm)	Material	Part No.
21.5	nickel plated steel	10.SPN.M6
21.5	nickel plated steel	10.SPN.M8

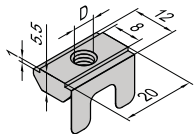
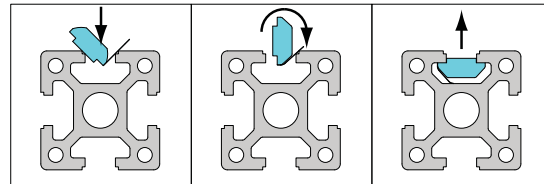
Subsequent Nut

Nut can be inserted into T slot from slot outside directly while spring leaf hold its position.

Material : zinc plated steel



Reliability	★ ★ ★
Efficiency	★ ★ ★ ★ ★
Cost	★ ★ ★

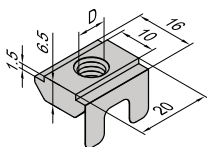


Subsequent Nut-8-M5

Subsequent Nut-8-M6



D	Material	Mass (g/pcs)	Part No.
M6	zinc plated steel	5.0	08.SN.M6



Subsequent Nut-10-M4

Subsequent Nut-10-M5

Subsequent Nut-10-M6

Subsequent Nut-10-M8



D	Material	Mass (g/pcs)	Part No.
M6	zinc plated steel	8.0	10.SN.M6
M8	zinc plated steel	8.0	10.SN.M8



SICA INDIA

Head Office :

H2, Globe Complex, Anjur Road, Ovli Village, Bhiwandi, Thane 421 302,
Maharashtra INDIA. Customer care : +91 809 704 8513

email : info@sica.in; Web : www.sica.in